

Appendix E - Wireline Viewpoints from the Castle of Mey

Figure E 1 - Viewpoint 1a: Castle of Mey - 3m AGL

Ordnance Survey data © Crown copyright and database right 2023



— Battery Storage Units
— Substation Infrastructure

Date September 2024	By DT	Viewpoint Information: Grid Reference: 329010E 973894N Ground Height: 26m AOD Direction of Centre of View: 166.5° Horizontal Field of View: 38.6° Vertical Field of View: 26.3° Principal Distance: 557mm
Image Size 390 x 260mm	QA RH	
Paper Size 420 x 297mm	Rev -	
0885-wireline		

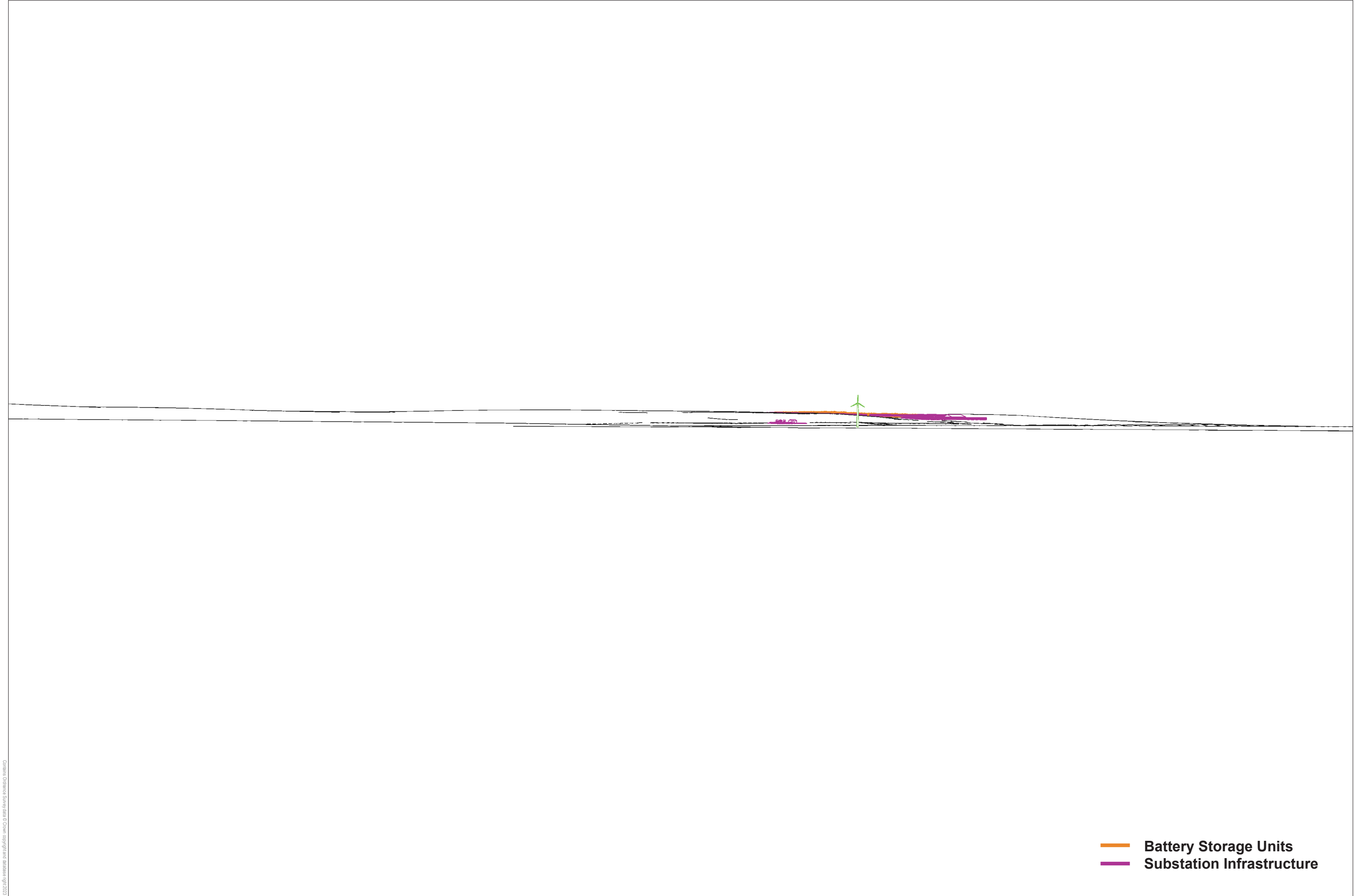


**STEPHENSON
HALLIDAY**
Planning, Landscape & Environment
an **RSK** company

Rigifa BESS
WIRELINE
Viewpoint 1a: Castle of Mey - 3m AGL
(turbine at Village Hall shown for scale)

Figure E 2 - Viewpoints 1b: Castle of Mey - 5m AGL

Ordnance Survey data © Crown copyright and database right 2023



— Battery Storage Units
— Substation Infrastructure

Date September 2024	By DT	Viewpoint Information: Grid Reference: 329010E 973894N Ground Height: 26m AOD Direction of Centre of View: 166.5° Horizontal Field of View: 38.6° Vertical Field of View: 26.3° Principal Distance: 557mm
Image Size 390 x 260mm	QA RH	
Paper Size 420 x 297mm	Rev -	
0885-wireline		

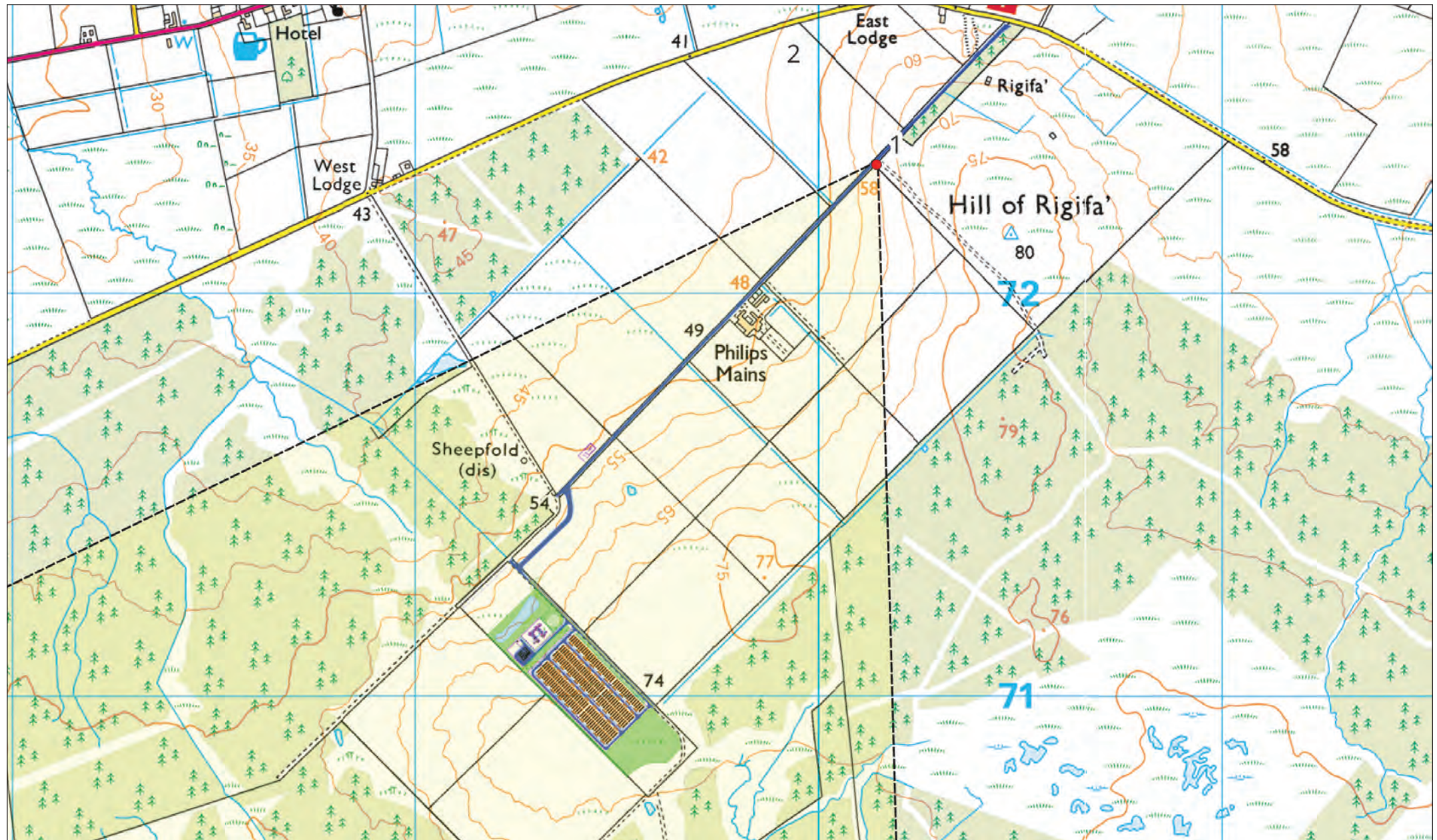


**STEPHENSON
HALLIDAY**
Planning, Landscape & Environment
an **RSK** company

Rigifa BESS
WIRELINE
Viewpoint 1b: Castle of Mey - 5m AGL
(turbine at Village Hall shown for scale)

APPEDDIX 5 – VISUALISATIONS

Viewpoint 1 - Rigifa



Grid Reference: 330143E, 972321N

AOD: 63.2m

This viewpoint is located at the junction between two access tracks northeast of residential dwelling at Philips Mains. This track is an informal recreational route and accessed from the local road, 0.5km to the northeast. There is space to park to the side of the informal junction and the viewpoint is located on the layby adjacent to a disused boat.



Existing View

Viewpoint 1: Rigifa

Easting: 330143 Northing: 972321

View Direction: 211.2°

Horizontal Field of View: 65.5°

Camera Height: 1.5m

Date: 22/08/2024Time: 13:53

The images contained on this page and the following page are not representative of scale and distance from the actual viewpoint and show the development in its wider landscape context only.



Photowire
Viewpoint 1: Rigifa Easting: 330143 Northing: 972321 View Direction: 211.2° Horizontal Field of View: 65.5° Camera Height: 1.5m Date: 22/08/2024 Time: 13:53

The images contained on this page and the following page are not representative of scale and distance from the actual viewpoint and show the development in its wider landscape context only.



Photomontage - Year 1

Viewpoint 1: Rigifa

Easting: 330143 Northing: 972321

View Direction: 211.2°

Horizontal Field of View: 65.5°

Camera Height: 1.5m

Date: 22/08/2024

Time: 13:53

The images contained on this page and the following page are not representative of scale and distance from the actual viewpoint and show the development in its wider landscape context only.



Photomontage - Year 10

Viewpoint 1: Rigifa

Easting: 330143 Northing: 972321

View Direction: 211.2°

Horizontal Field of View: 65.5°

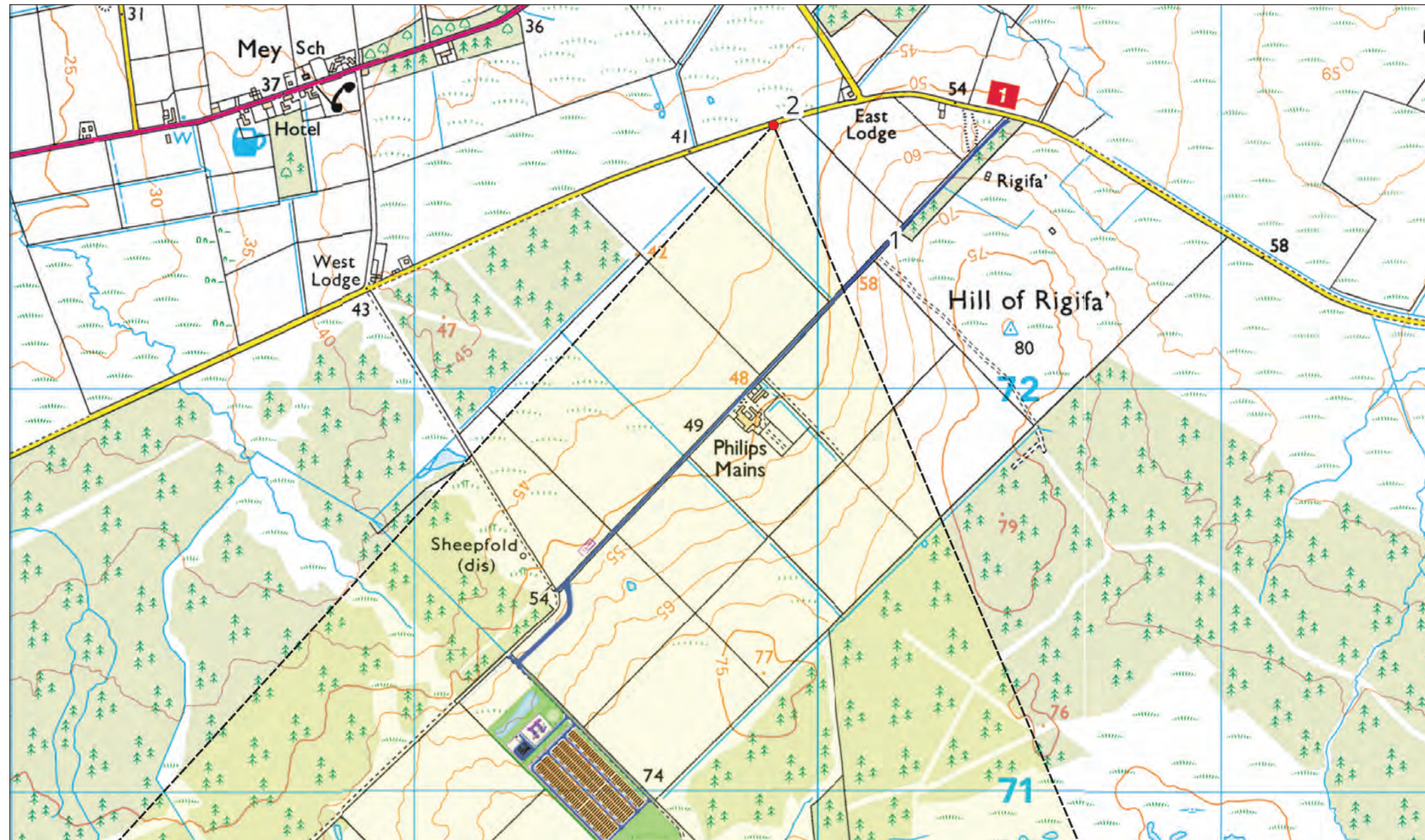
Camera Height: 1.5m

Date: 22/08/2024

Time: 13:53

The images contained on this page and the following page are not representative of scale and distance from the actual viewpoint and show the development in its wider landscape context only.

Viewpoint 2 - NCN 1



Contains Ordnance Survey data © Crown copyright and database right 2024

Grid Reference: 329889E, 972655N

AOD: 46.6m

This viewpoint is located on a layby on the Local Road and NCN 1, west of the residential property at East Lodge. This local road runs parallel and 0.6 km south of the A836 and south-west of Mey. There is space to allow several cars within the layby.



Existing View

Viewpoint 2: NCN 1

Easting: 329889 Northing: 972655

View Direction: 189.7°

Horizontal Field of View: 65.5°

Camera Height: 1.5m

Date: 22/08/2024Time: 13:38

The images contained on this page and the following page are not representative of scale and distance from the actual viewpoint and show the development in its wider landscape context only.



Photowire

Viewpoint 2: NCN 1	Easting: 329889 Northing: 972655	View Direction: 189.7°	Horizontal Field of View: 65.5°	Camera Height: 1.5m	Date: 22/08/2024	Time: 13:38
--------------------	----------------------------------	------------------------	---------------------------------	---------------------	------------------	-------------

The images contained on this page and the following page are not representative of scale and distance from the actual viewpoint and show the development in its wider landscape context only.



Photomontage - Year 1

Viewpoint 2: NCN 1

Easting: 329889 Northing: 972655

View Direction: 189.7°

Horizontal Field of View: 65.5°

Camera Height: 1.5m

Date: 22/08/2024

Time: 13:38

The images contained on this page and the following page are not representative of scale and distance from the actual viewpoint and show the development in its wider landscape context only.



Photomontage - Year 10

Viewpoint 2: NCN 1

Easting: 329889 Northing: 972655

View Direction: 189.7°

Horizontal Field of View: 65.5°

Camera Height: 1.5m

Date: 22/08/2024

Time: 13:38

The images contained on this page and the following page are not representative of scale and distance from the actual viewpoint and show the development in its wider landscape context only.

Viewpoint 3 - East Mey



Contains Ordnance Survey data © Crown copyright and database right 2024

Grid Reference: 330278E, 973865N

AOD: 60.6m

This viewpoint is located on the A836 (North Coast 500) at East Mey on roadside verge at a layby next to a farm shed. The viewpoint is located beside the farm entrance on the western side of the shed. There is space to allow several cars within the layby.



Existing View

Viewpoint 3: East Mey

Easting: 330278 Northing: 973865

View Direction: 185.4°

Horizontal Field of View: 65.5°

Camera Height: 1.5m

Date: 22/08/2024 Time: 16:32

The images contained on this page and the following page are not representative of scale and distance from the actual viewpoint and show the development in its wider landscape context only.



Photowire
Viewpoint 3: East Mey Easting: 330278 Northing: 973865 View Direction: 185.4° Horizontal Field of View: 65.5° Camera Height: 1.5m Date: 22/08/2024 Time: 16:32

The images contained on this page and the following page are not representative of scale and distance from the actual viewpoint and show the development in its wider landscape context only.



Photomontage - Year 1

Viewpoint 3: East Mey

Easting: 330278 Northing: 973865

View Direction: 185.4°

Horizontal Field of View: 65.5°

Camera Height: 1.5m

Date: 22/08/2024

Time: 16:32

The images contained on this page and the following page are not representative of scale and distance from the actual viewpoint and show the development in its wider landscape context only.



Photomontage - Year 10

Viewpoint 3: East Mey

Easting: 330278 Northing: 973865

View Direction: 185.4°

Horizontal Field of View: 65.5°

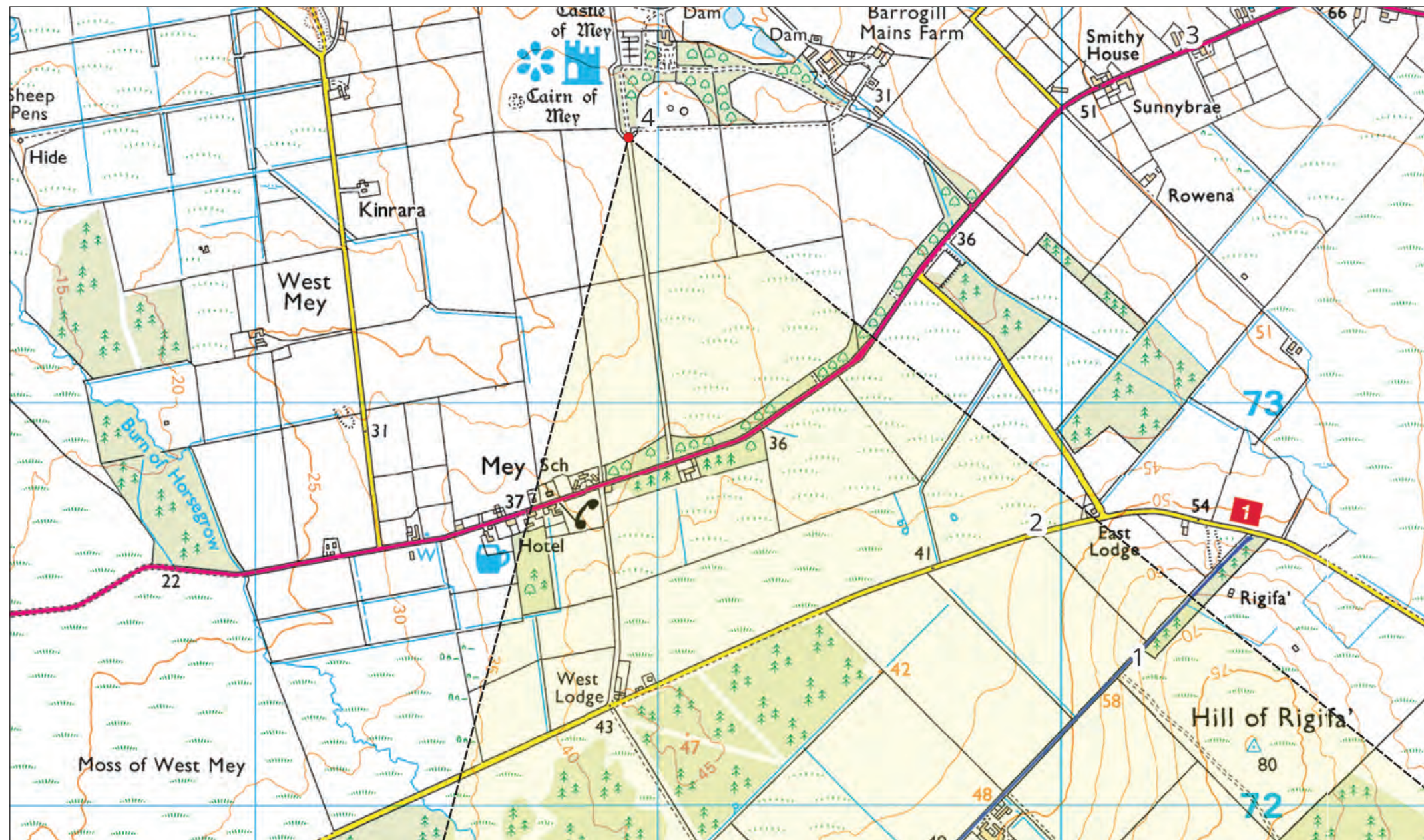
Camera Height: 1.5m

Date: 22/08/2024

Time: 16:32

The images contained on this page and the following page are not representative of scale and distance from the actual viewpoint and show the development in its wider landscape context only.

Viewpoint 4 - Castle of Mey Approach



Contains Ordnance Survey data © Crown copyright and database right 2024

Grid Reference: 328926E, 973660N

AOD: 33.7m

This viewpoint is located on the approach road to the Castle of Mey Garden and Designed Landscape, immediately south of the Lodge Gate (marked 'private') and woodland. The Approach road is accessed from the A836 and there is signage to the main carpark north of the Castle.



Existing View

Viewpoint 4: Castle of Mey Approach

Easting: 328926 Northing: 973660

View Direction: 162°

Horizontal Field of View: 65.5°

Camera Height: 1.5m

Date: 22/08/2024Time: 12:26

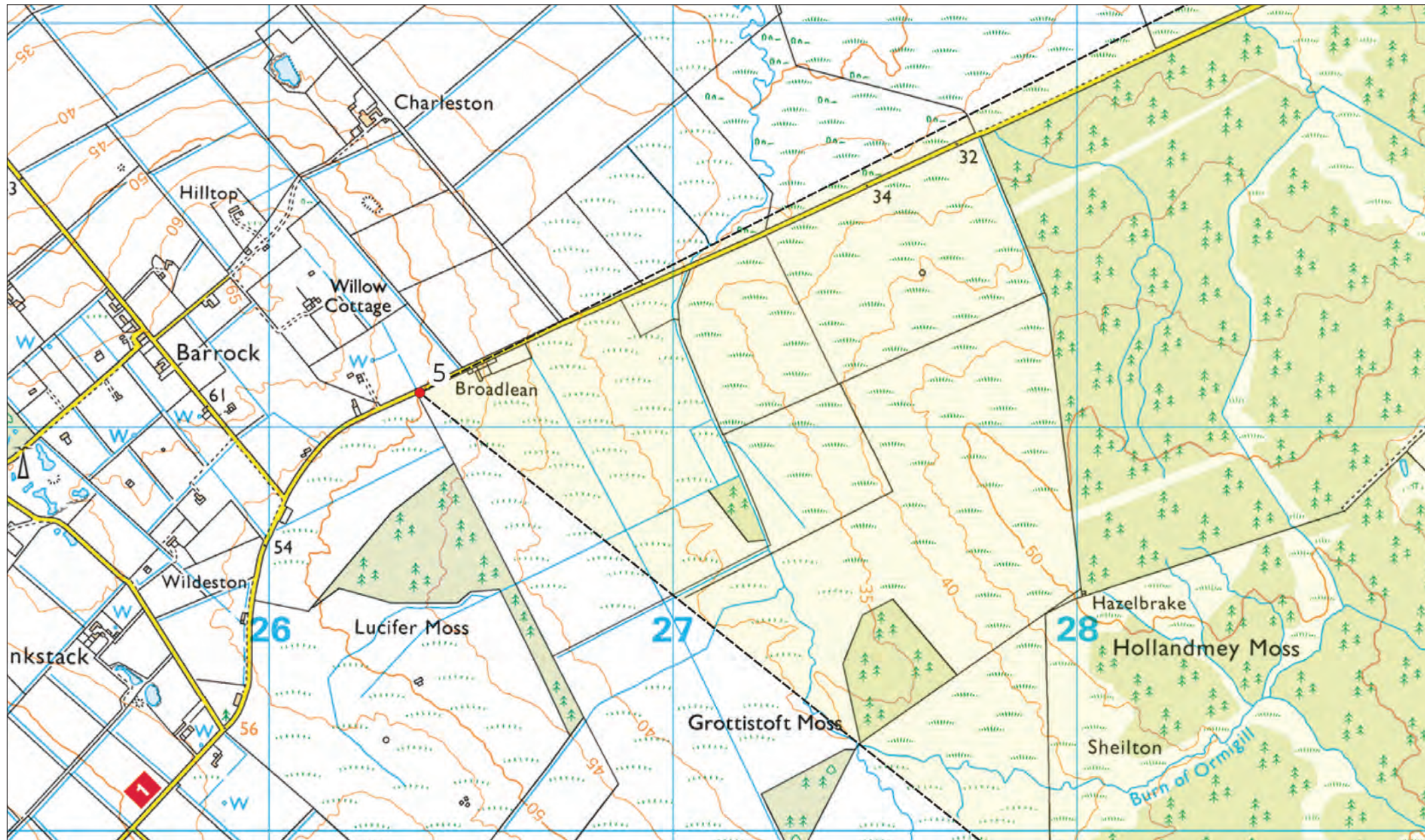
The images contained on this page and the following page are not representative of scale and distance from the actual viewpoint and show the development in its wider landscape context only.



Photowire
Viewpoint 4: Castle of Mey Approach Easting: 328926 Northing: 973660 View Direction: 162° Horizontal Field of View: 65.5° Camera Height: 1.5m Date: 22/08/2024 Time: 12:26

The images contained on this page and the following page are not representative of scale and distance from the actual viewpoint and show the development in its wider landscape context only.

Viewpoint 5 - Barrock



Contains Ordnance Survey data © Crown copyright and database right 2024

Grid Reference: 326373E, 971086N

AOD: 52.1m

This viewpoint is located beside a farm gate on a roadside verge of the local road west of the residential property Broadlean, which features in the foreground of the view. There are a series of parking bays at the junction to Barrock between the two local roads, 0.4 km west of this viewpoint location



Existing View

Viewpoint 5: Barrock

Easting: 326373 Northing: 971086

View Direction: 95.9°

Horizontal Field of View: 65.5°

Camera Height: 1.5m

Date: 22/08/2024Time: 12:09

The images contained on this page and the following page are not representative of scale and distance from the actual viewpoint and show the development in its wider landscape context only.



Photowire
Viewpoint 5: Barrock Easting: 326373 Northing: 971086 View Direction: 95.9° Horizontal Field of View: 65.5° Camera Height: 1.5m Date: 22/08/2024 Time: 12:09

The images contained on this page and the following page are not representative of scale and distance from the actual viewpoint and show the development in its wider landscape context only.



Photomontage - Year 1

Viewpoint 5: Barrock

Easting: 326373 Northing: 971086

View Direction: 95.9°

Horizontal Field of View: 65.5°

Camera Height: 1.5m

Date: 22/08/2024

Time: 12:09

The images contained on this page and the following page are not representative of scale and distance from the actual viewpoint and show the development in its wider landscape context only.



Photomontage - Year 10

Viewpoint 5: Barrock

Easting: 326373 Northing: 971086

View Direction: 95.9°

Horizontal Field of View: 65.5°

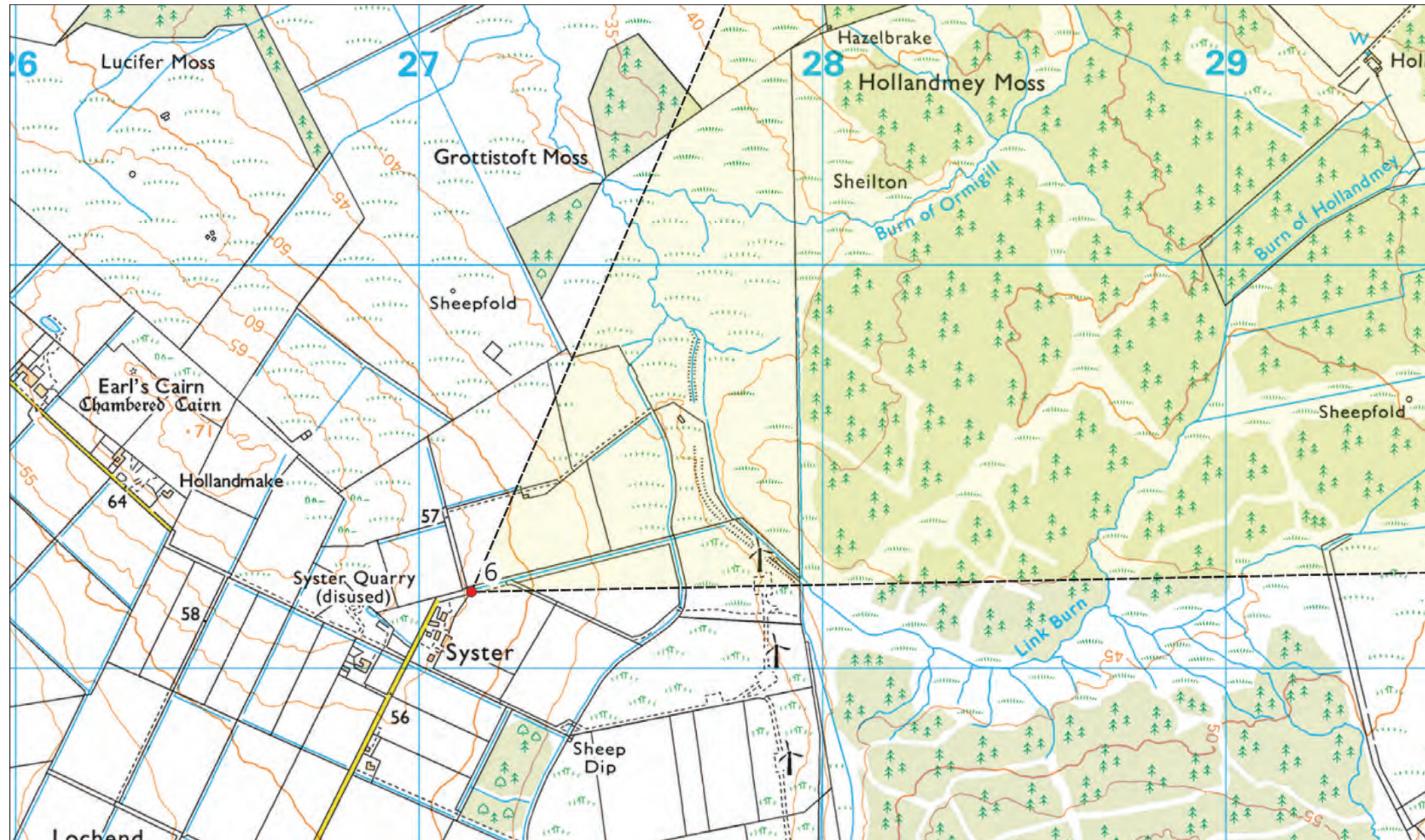
Camera Height: 1.5m

Date: 22/08/2024

Time: 12:09

The images contained on this page and the following page are not representative of scale and distance from the actual viewpoint and show the development in its wider landscape context only.

Viewpoint 6 - Lochend



Contains Ordnance Survey data © Crown copyright and database right 2024

Grid Reference: 327130E, 969191N

AOD: 56.3m

This viewpoint is located at the gate of the local farm track to the northeast of farm buildings at Syster, at the western edge of Lochend. Parking is available at Syster Farm. The viewpoint location can be accessed on foot at the gate entrance to a field.



Existing View

Viewpoint 6: Lochend

Easting: 327130 Northing: 969191

View Direction: 56.1°

Horizontal Field of View: 65.5°

Camera Height: 1.5m

Date: 22/08/2024Time: 11:31

The images contained on this page and the following page are not representative of scale and distance from the actual viewpoint and show the development in its wider landscape context only.



Photowire
Viewpoint 6: Lochend Easting: 327130 Northing: 969191 View Direction: 56.1° Horizontal Field of View: 65.5° Camera Height: 1.5m Date: 22/08/2024 Time: 11:31

The images contained on this page and the following page are not representative of scale and distance from the actual viewpoint and show the development in its wider landscape context only.



Photomontage - Year 1

Viewpoint 6: Lochend

Easting: 327130 Northing: 969191

View Direction: 56.1°

Horizontal Field of View: 65.5°

Camera Height: 1.5m

Date: 22/08/2024

Time: 11:31

The images contained on this page and the following page are not representative of scale and distance from the actual viewpoint and show the development in its wider landscape context only.



Photomontage - Year 10

Viewpoint 6: Lochend

Easting: 327130 Northing: 969191

View Direction: 56.1°

Horizontal Field of View: 65.5°

Camera Height: 1.5m

Date: 22/08/2024

Time: 11:31

The images contained on this page and the following page are not representative of scale and distance from the actual viewpoint and show the development in its wider landscape context only.